

# Choumert Square, SE15

Total Internal Area 62.1 sqm / 668 sqft  
 Total External Area 7.6 sqm / 82 sqft

## Ground Floor

Kitchen, Dining, Living 21.3 sqm / 229 sqft  
 Bathroom 4.5 sqm / 48 sqft

## First Floor

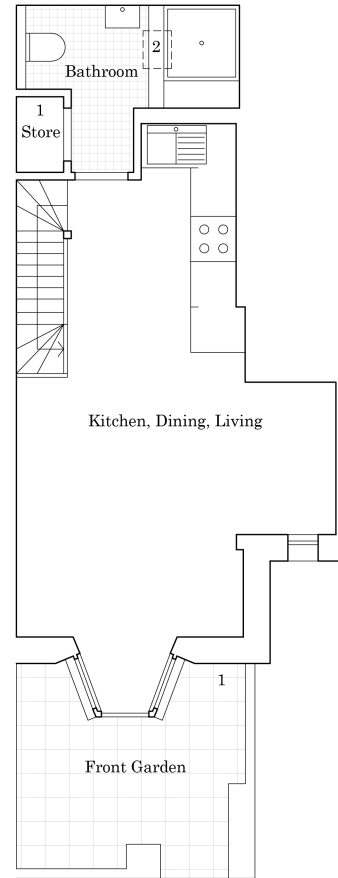
Bedroom 1 7.3 sqm / 79 sqft  
 Bedroom 2 10.3 sqm / 111 sqft

## Loft Conversion

Loft 11.1 sqm / 119 sqft

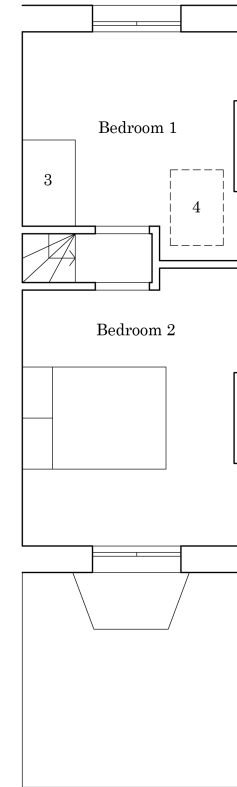
- 1 - Boiler
- 2 - Rooflight
- 3 - Stair Head Room
- 4 - Loft Access Ladder
- 5 - Rooflight

Illustration for identification purposes only.  
 All measurements are approximate and rounded values.

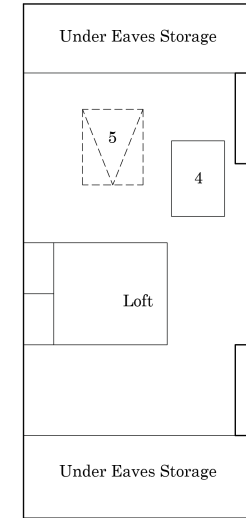


Mews

Ground Floor



First Floor



Loft Conversion



[www.bonningtonsquare.com](http://www.bonningtonsquare.com)

49b Fenwick Road, London, SE15 4HS

07969 108829

