

# Adys Road, SE15

Total Internal Area 47.9 sqm / 516 sqft

## First Floor

|                         |                     |
|-------------------------|---------------------|
| Hall                    | 3.8 sqm / 41 sqft   |
| Kitchen, Living, Dining | 19.3 sqm / 208 sqft |
| Bedroom 1               | 13 sqm / 140 sqft   |
| Bedroom 2               | 7.4 sqm / 80 sqft   |
| Bathroom                | 3.2 sqm / 34 sqft   |

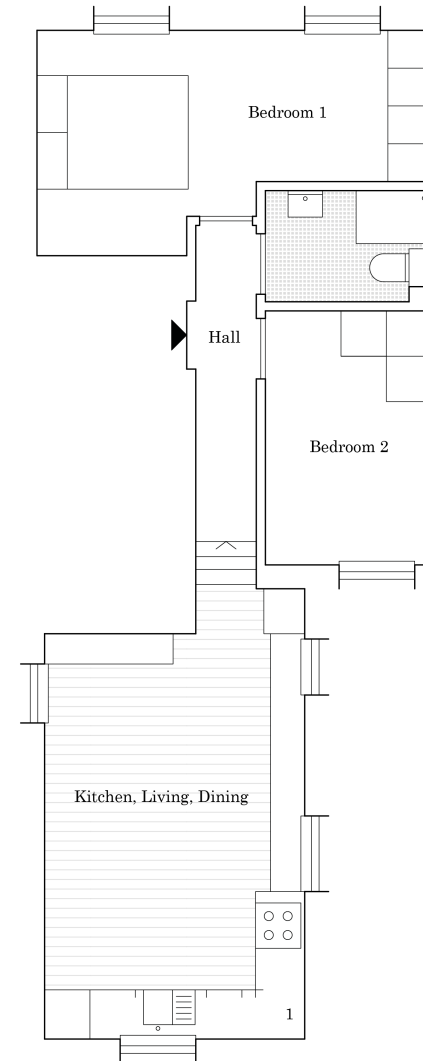
Illustration for identification purposes only.  
All measurements are approximate and rounded values.

# BO SQ

[www.bonningtonsquare.com](http://www.bonningtonsquare.com)

49b Fenwick Road, London, SE15 4HS

07969 108829



1 - Boiler