

## Holly Grove, SE15



Mezzanine Floor

Total Internal Area 126 sqm / 1356 sqft  
Total External Area 81 sqm / 872 sqft

### Mezzanine Floor

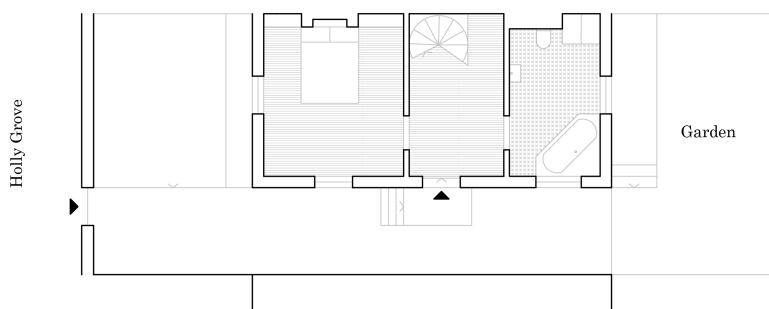
Studio 9 sqm / 97 sqft



First Floor

### First Floor

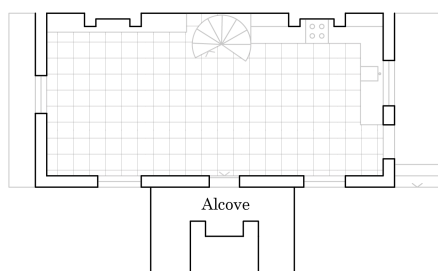
Bedroom 11 sqm / 118 sqft  
Bedroom 26 sqm / 280 sqft



Ground Floor

### Ground Floor

Bedroom 16 sqm / 172 sqft  
Hallway 10 sqm / 108 sqft  
Bathroom 10 sqm / 108 sqft



Lower Ground Floor

### Lower Ground Floor

Open Plan 38 sqm / 409 sqft  
Alcove 7 sqm / 75 sqft

Illustration for identification purposes only.  
All measurements are approximate and rounded to 10 values.



1 2 5

